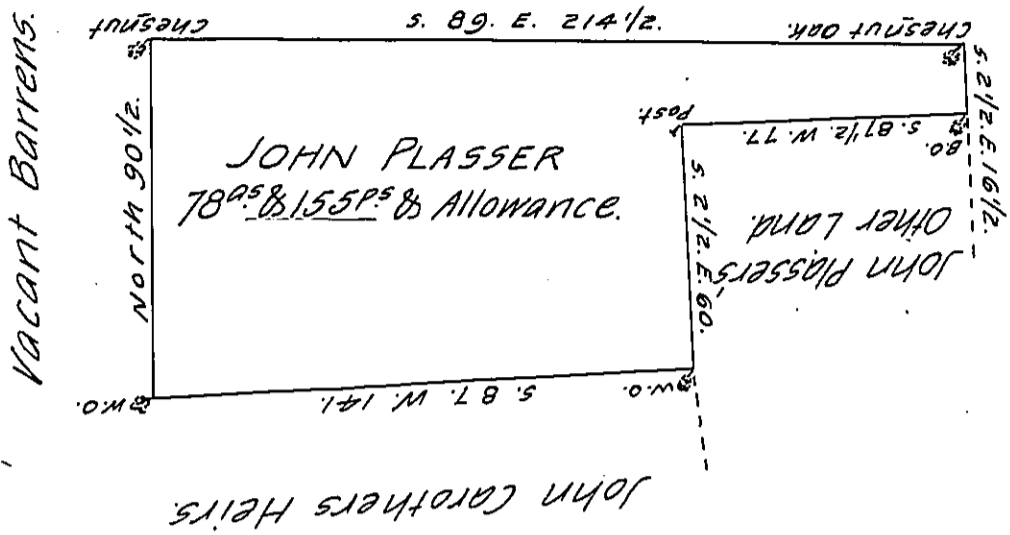


By the North Mountain



The Draught of a Tract of Land Called _____ Situate in West Pennsborrow Township, Cumberland County. Containing Seventy eight Acres and One hundred and fifty five perches And the Usual Allowance of Six $\frac{7}{8}$ Cent for Roads &c^a

Surveyed for John Plasser the 4th Day of March 1785, in Pursuance of a Warrant from the Supreme Executive Council of the Common Wealth of Pennsylvania bearing Date at Philad^a the first Day of Sept^r 1784.

$\frac{7}{8}$ Sam^l Lyon, D.S.

To John Lukens, Esq^r }
Surveyor General. }

IN TESTIMONY that the above is a copy of the original remaining on file in the Department of Internal Affairs of Pennsylvania, made conformably to an Act of Assembly approved the 16th day of February, 1833, I have hereunto set my Hand and caused the Seal of said Department to be affixed at Harrisburg, this seventeenth day of April 1906.

Loac R Brown
Secretary of Internal Affairs.